

Client \_\_\_\_\_ Quantity \_\_\_\_\_  
 Project \_\_\_\_\_ Position \_\_\_\_\_

## FUN 600

**Model:** F60/90PCG/T

**Cod:** MP01012111001



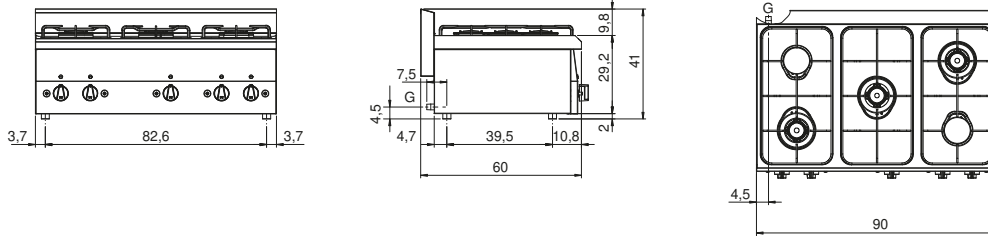
### Technical data

<b>Modularity:</b>	Top
<b>Dimension (mm):</b>	900x600x300
<b>Total gas power (Kcal/h):</b>	14962
<b>Total gas power (kW):</b>	17,4
<b>Gas connection:</b>	1/2"
<b>Net volume (m3):</b>	0,162
<b>Packing dimensions (mm):</b>	976x695x630
<b>Gross weight (kg):</b>	30
<b>Burner power 1 (kW):</b>	3,6
<b>Burner power 2 (kW):</b>	3,3
<b>Burner power 3 (kW):</b>	3,3
<b>Burner power 4 (kW):</b>	3,6
<b>Burner power 5 (kW):</b>	3,6
<b>Gross volume (m3):</b>	0,427

### Features

<b>Burners:</b>	Piezo ignition available in double or single crown
<b>Grill:</b>	Removable enamelled container for cleaning
<b>Working top:</b>	Made of AISI 304 stainless steel with a thickness of 8/10 mm
<b>Knobs:</b>	Knobs are made from a sturdy heat-resistant polymer blend
<b>Flue:</b>	Made in a single piece, which facilitates the alignment of the modules
<b>Kit Gas:</b>	Natural gas conversion kit 30/50 m/bar (tested with natural gas G20)

Technical draw



G: Gas connection 1/2"